



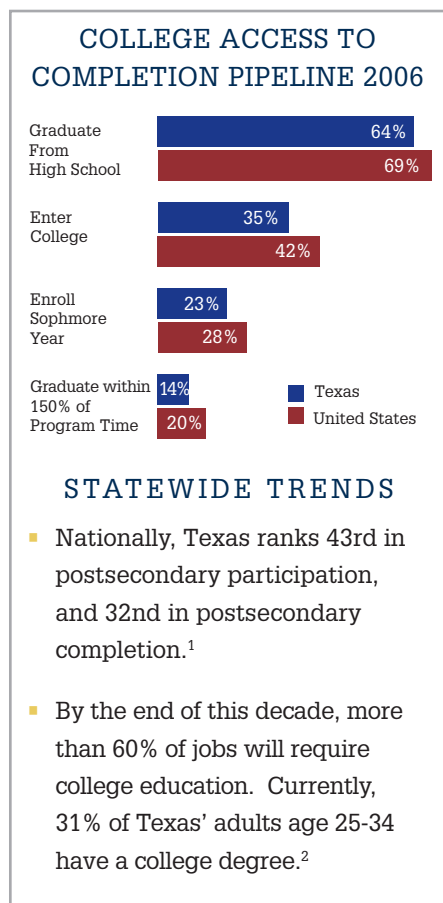
Texas College Access Network

OVERVIEW

The Texas College Access Network (TxCAN) is part of the National College Access Network (NCAN), created to establish a sustainable network of agencies and organizations working collaboratively to increase student access and success in postsecondary education.

Through TxCAN, organizations (such as the institutions of higher education, school districts, school counselors, non-profit and for-profit college access service providers, and state agencies) will have greater opportunities to work together in furthering a common mission of greater student postsecondary access and success.

Because of established networks and existing relationships with Texas school districts, state education agencies, policymakers, higher education institutions, business, and philanthropy, the Texas High School Project (THSP) is leading the statewide development of TxCAN.



OBJECTIVES

TxCAN will create a platform for aligning national, state, and local activities to ultimately improve student outcomes in postsecondary access and success. Key initiatives will focus on building awareness of existing college access activities and resources; aligning the strategic efforts of various stakeholders; and providing tools to measure the impact of college access support efforts.

To accomplish these goals, THSP will develop a regional pilot of college access coordination, evaluate its outcomes, identify policy implications to educate key stakeholders, and create a plan to scale a sustainable statewide network.

By 2040, if current educational attainment trends persist, Texans will experience the following³:

- 12% decline in average household income
- 15% increasing the number of households living in poverty
- \$15 billion lower state tax revenue
- Increase of 100,000 in prison population and additional \$1.5 billion per year in incarceration costs

1. FSG – The Texas Higher Education Plan; Report from the Select Commission on Higher Education and Global Competitiveness
 2. Complete College America
 3. FSG – College Access / Completion Pipeline Chart from NCES and THECB data in the State of Texas' Report of the Select Commission on Higher Education and Global Competitiveness, January 2009 ; Steve Murdock, Institute for Demographic and Socioeconomic Research, UT San Antonio; projections based on 1.0 population growth scenario